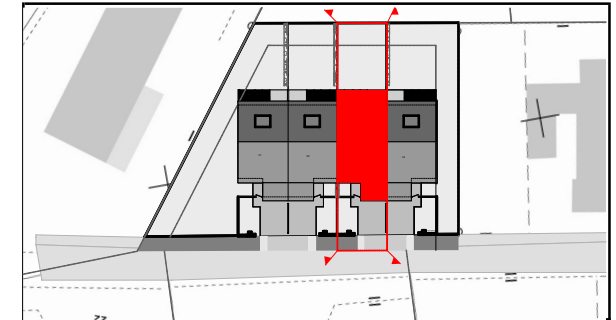
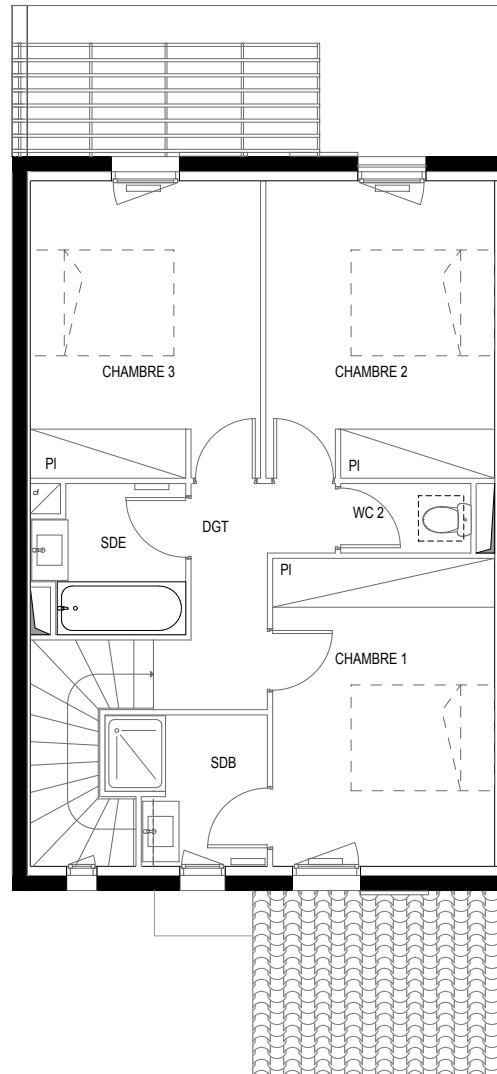
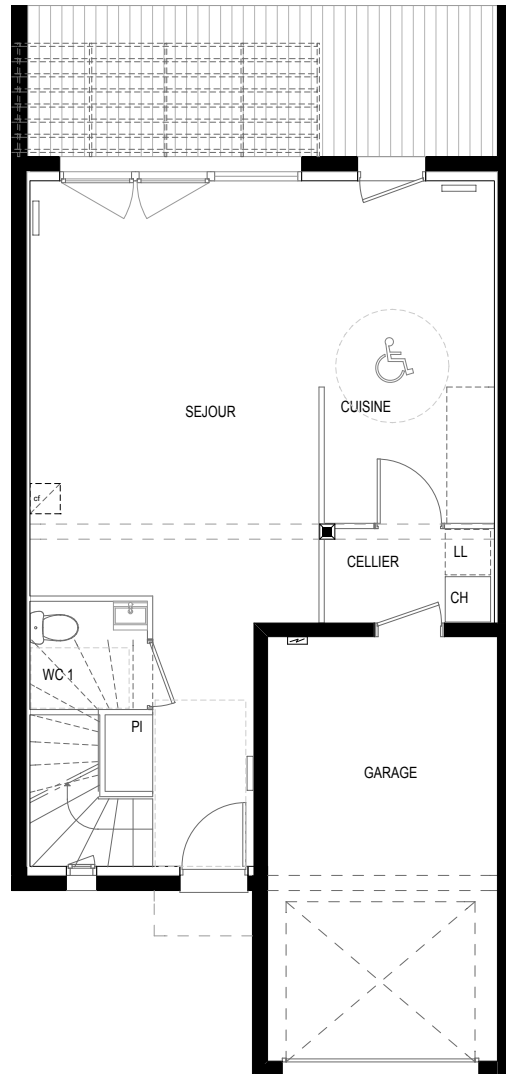


TOP REALISATIONS
Immobilier Promotion

VILLAS DU CHÂTEAU

Impasse de la Saudrune
LAUNAGUET (31140)



T4 - Villa 3
Niveau- RDC-R+1

Surfaces Habitables (m2)

Séjour+PI	26,59 m ²
Cuisine	10,40 m ²
Chambre 1+PI	11,97 m ²
Chambre 2+PI	11,87 m ²
Chambre 3+PI	11,95 m ²
Wc 1	2,22 m ²
Wc 2	1,58 m ²
Sde	3,66 m ²
Sdb	3,80 m ²
Cellier	2,79 m ²
Dégagement	4,29 m ²

Total habitable 91,12 m²

Surfaces des annexes (m2)

Terrasse	12,45 m ²
Jardin	77,64 m ²
Garage	17,10 m ²
Parking	18,85 m ²

